

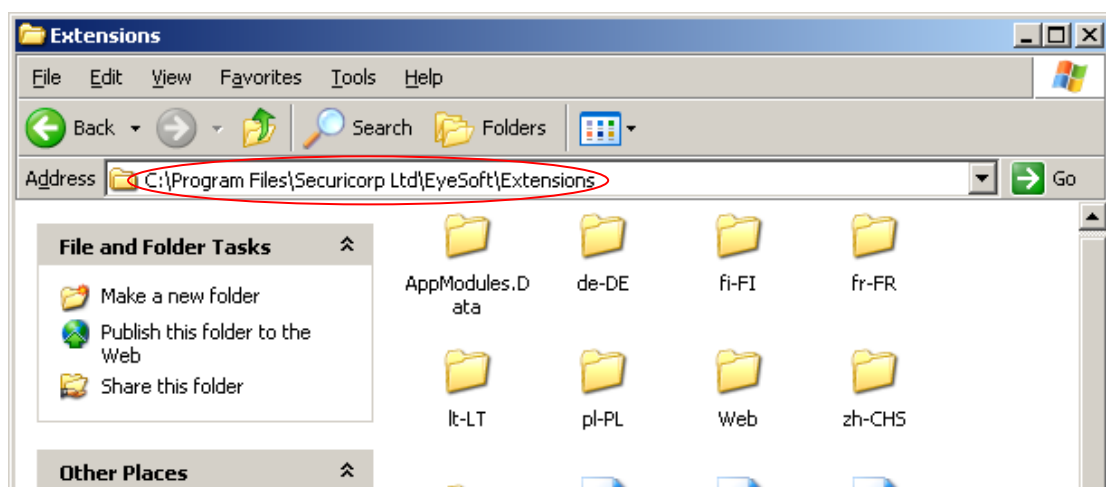
RTSP Server User Guide

For streaming video to other devices

Stream live CCTV video to Mobile Phones, Software and other devices using RTSP. The Real Time Streaming Protocol (RTSP) is a communication network protocol designed for communication systems to control streaming media servers. With this module, users are able to receive live & recorded video streams on players that support RTSP. To deploy the RTSP Server Module, please follow the instructions below: See Page 7 for connecting via **Mobile Phones** (enter URL in browser method)

1. Installation

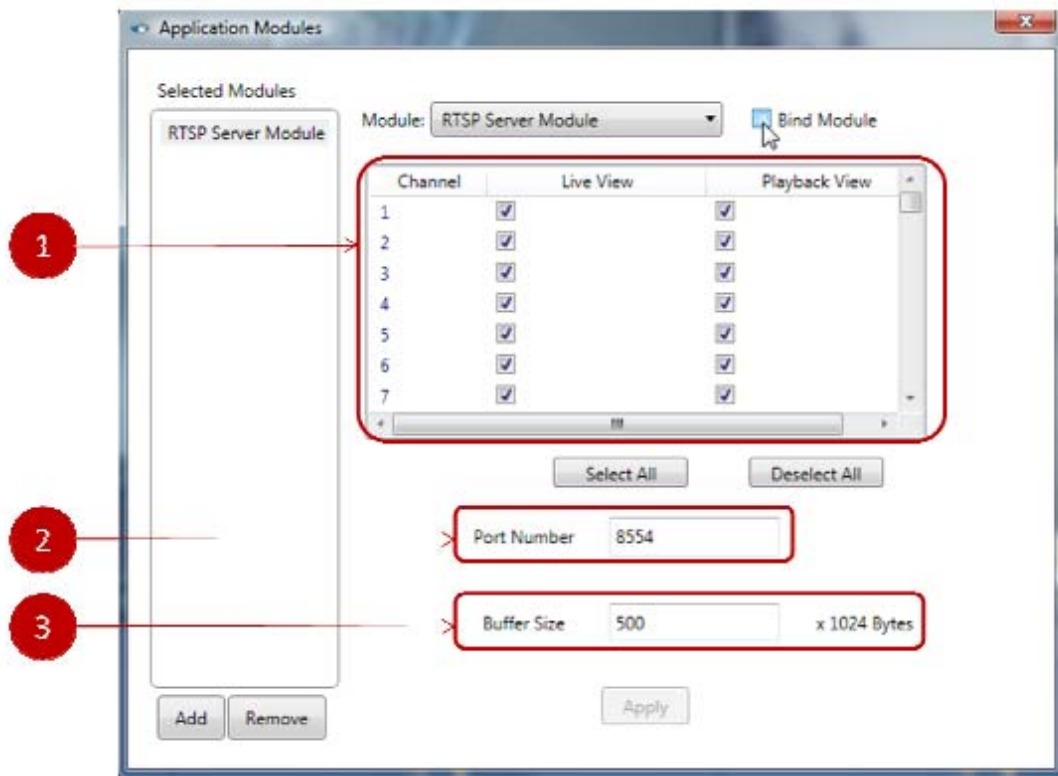
To install this module, please put the RTSP folder into the folder where EyeSoft is installed, e.g. "C \ Program Files\ Securicorp Ltd \ EyeSoft \ Extensions.



2. Add Module

Open the "Setting Dialog", click the "Application Module"

- Press "Add Module" button.
- Select the "RTSP Server Module" and press "OK". Now you should see the following configuration dialogue



1) Select channel(s) that connect to RTSP Server.

2) Setup the Port Number.

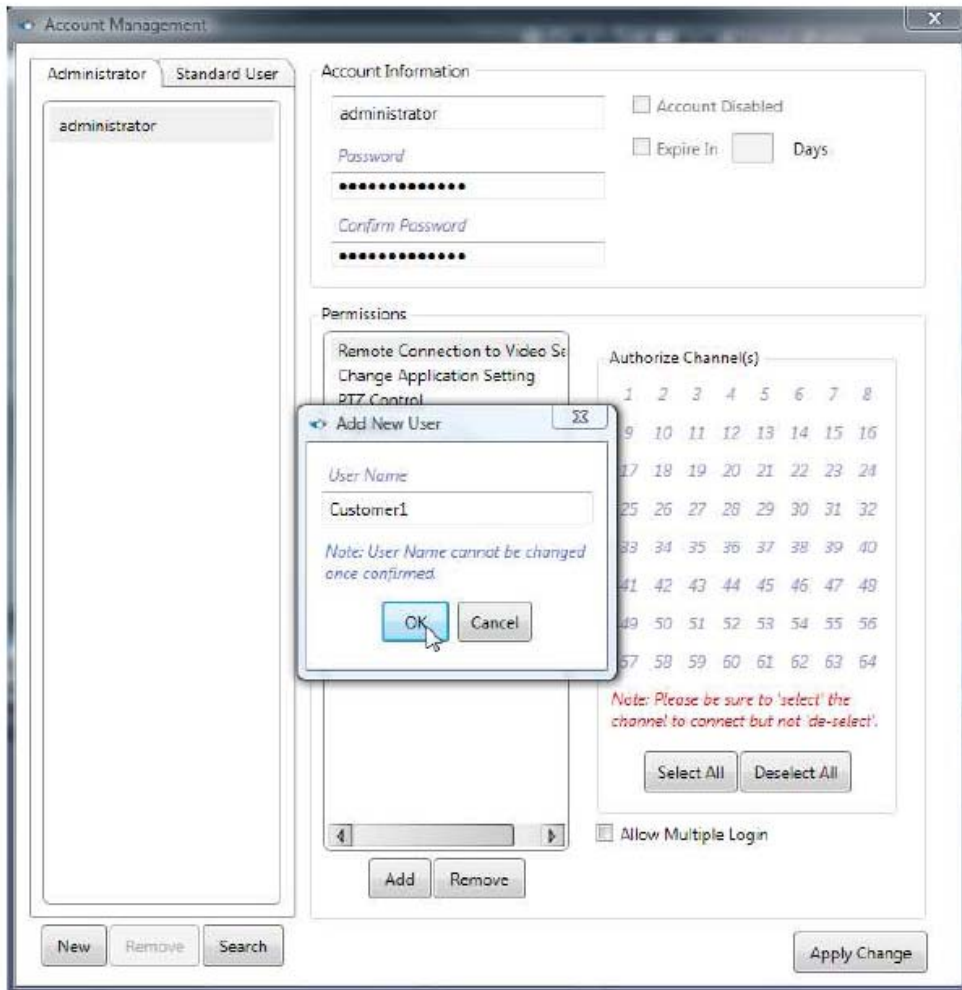
3) Decide the Buffer Size. Default setting would be 50 x 1024 bytes, you can adjust the number based on the network quality / bandwidth.

3. Create a “RTSP Server Account”

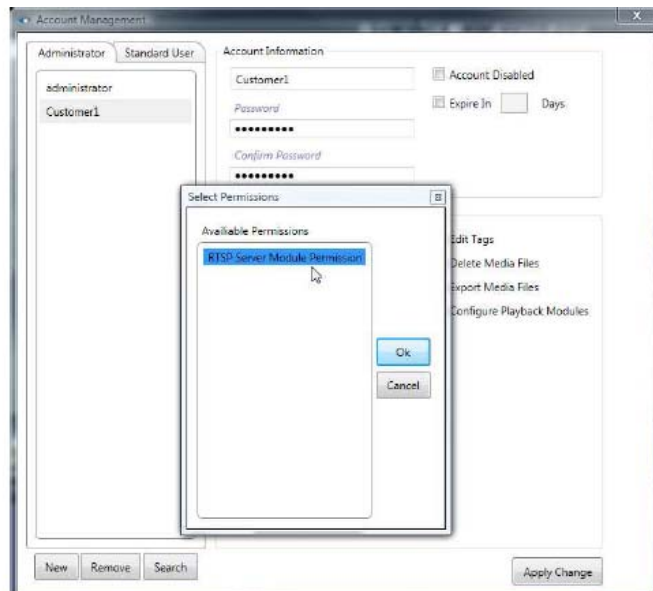
- Open the “Account Management” dialog



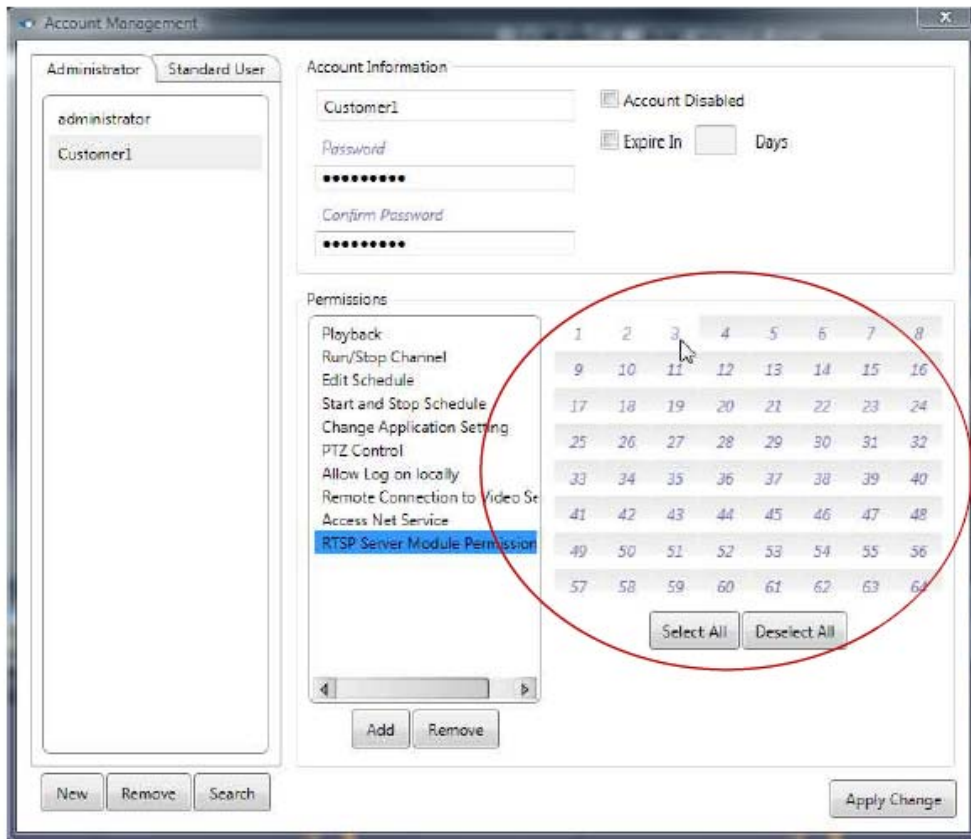
- Add a new user



- Enter the password
- Click "Add" to Add the "RTSP Server Module Permission" to the corresponding account



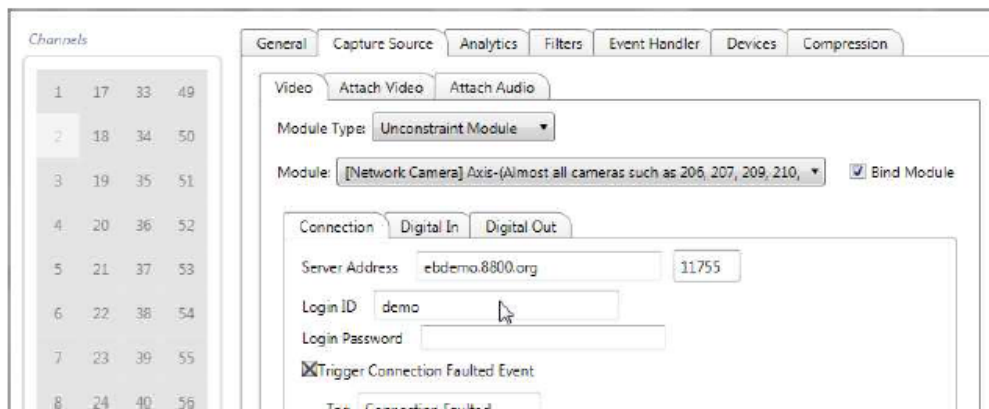
- Select the authorized channel with respect to the account

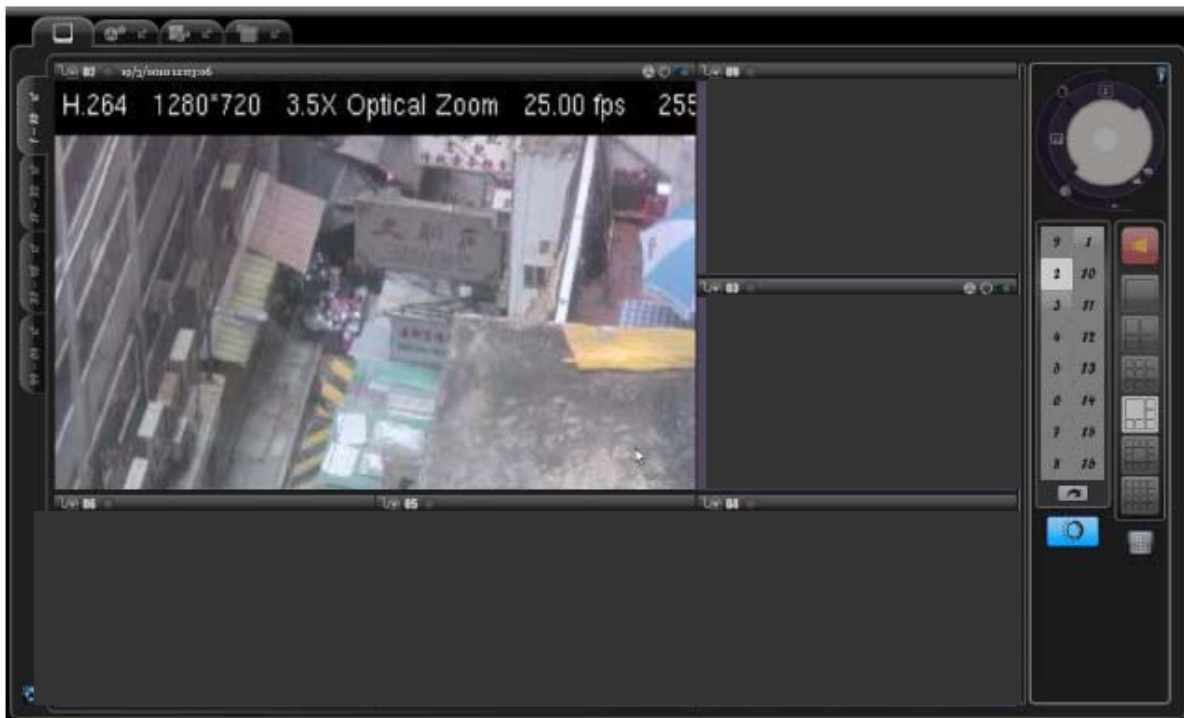


Please note that all settings would not be effective unless you press the “Apply Change” button.

4. Connect video via RTSP

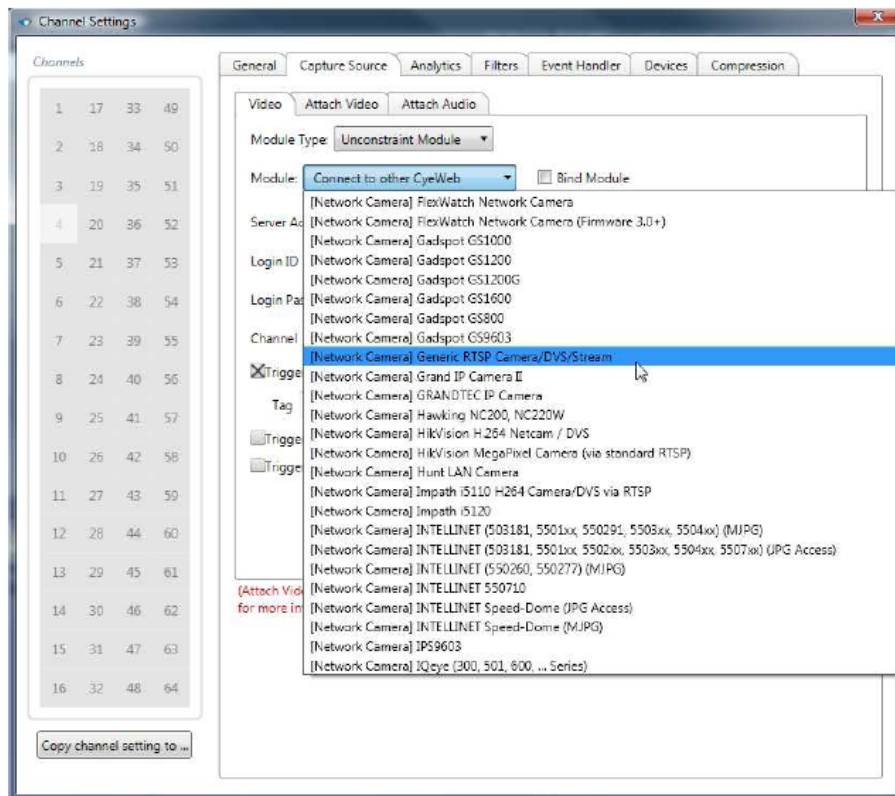
First of all, you must have an existing channel connected to a video stream. Lets use channel 2 as an example:





Open the “Channel Setting” dialog. Select the “CaptureSource” tab, then choose the [Network Camera] Generic RTSP Camera/DVS/Stream as the video source of channel

4:



Type in the relevant information:

1) Server address. If you want to watch live video, please type:
[address]/lv_[channel number]?ssn=[arbitrary number]

e.g.: 192.168.1.1/lv_1?ssn=123123123

If you want to watch playback video, please type:

[address]/pb_[channel number]?ssn=[arbitrary number]?starttime=
YYYY_MMM_DD_hh_mm_ss?endtime=YYYY_MMM_DD_hh_mm_ss?tag
tag name]

e.g.: 192.168.1.1/pb_0?ssn=111234?starttime=2010_Feb_12_20_30_00?
endtime=2010_Feb_12_21_00_00?tag=[motion detected]

- **Address:** RTSP Server address

- **Channel Number:** the specific channel you want to connect via RTSP. Please note that the number would be counted up from 0. That is, if you want to connect "channel1" of the RTSP Server, you should type "0" here.

- **SSN:** here you can input any unused number.

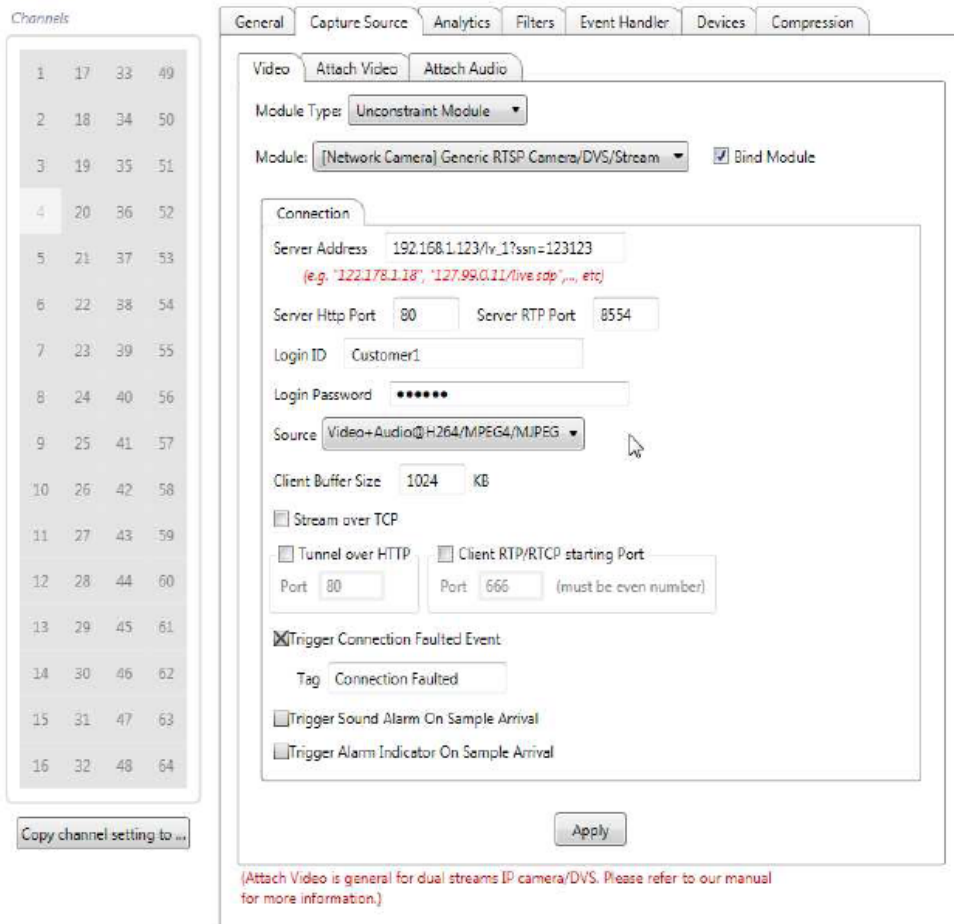
- **Starttime:** start time of the playback of video. If you do not input this parameter then the module would play from the oldest existing video.

- **Endtime:** end time of the playback video. If you do not enter this parameter then the module would play all the existing video.

- **Tag:** you are able to play the specific event by inputting this parameter

2) Server RTP Port which defined at the previous step

3) Login ID/Password that defined at the Account Management

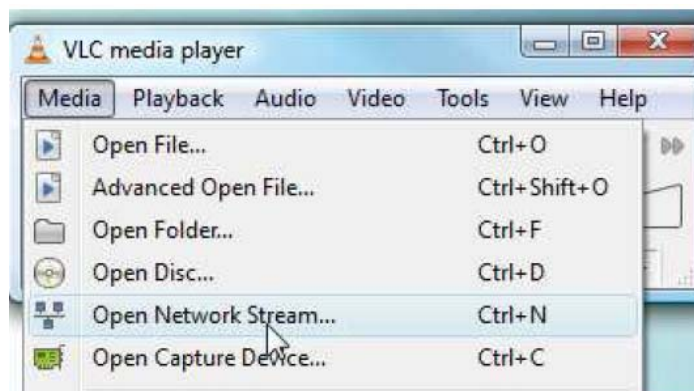


Make sure all the information had been filled in correctly, then check “Bind Module”. Now you should be able to see the video.

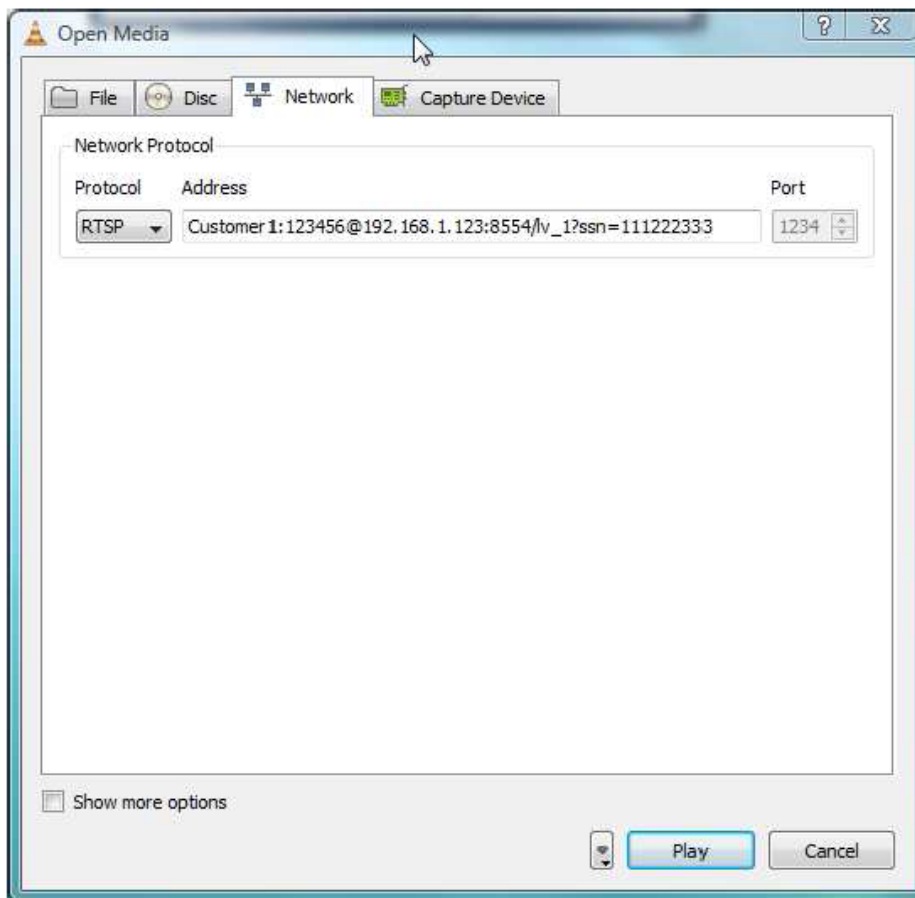
5. Connect video via RTSP by 3rd party media player that support RTSP

Here we can use other software like VLC media player as an example which is available for Windows & Mac. First of all, select “Open Network Stream”:

To connect via Mobile Phones, use the same method below by entering the URL in you mobile phones web browser or media player.



Choose "RTSP" as the network protocol, then type in the address:



For live-viewing, please type in the following:

[account ID]:[password]@[server address]:[port]/lv_[channel number]?ssn=[arbitrary number]

For watching playback video, please type in the following:

[account ID]:[password]@[server address]:[port]/pb_[channel number]?ssn=[arbitrary number]?starttime=YYYY_MM_DD_hh_mm_ss?endtime=YYYY_MM_DD_hh_mm_ss?tag=[tag name]

Make sure the information you typed is correct. There are no spaces in the strings above. Press "Play" and now you should be able to see the video.