

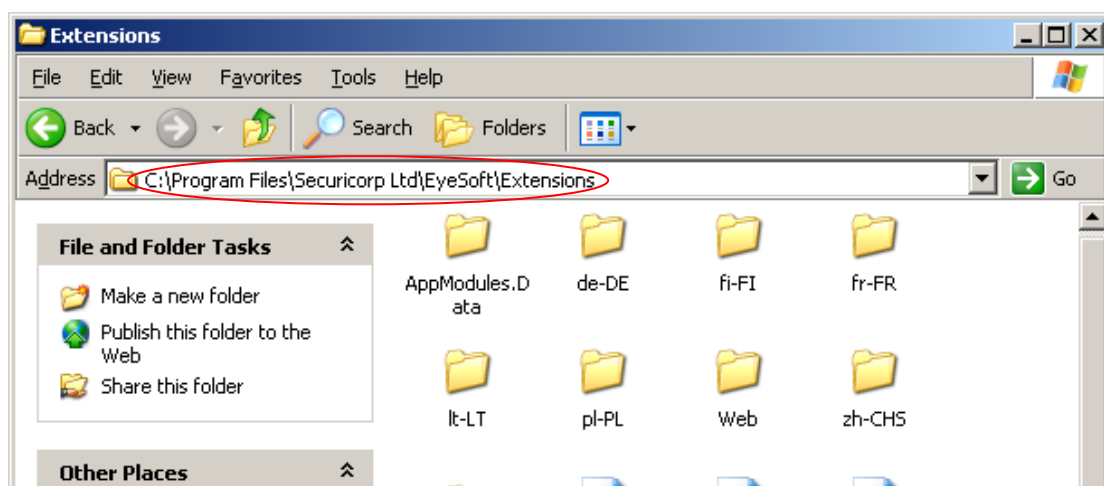
IP Video Wall User Guide

Video Wall Application for CCTV Matrix

This manual explains how to use the Video Wall(VW) application which allows users to build a virtual matrix and change the view of multiple installations of EyeSoft when displayed on a video wall. This can be achieved by using the multi-screen function in EyeSoft.

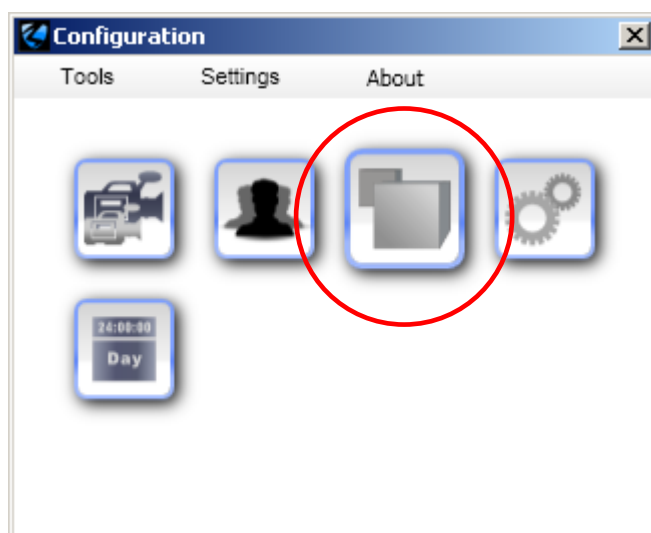
1. Installation

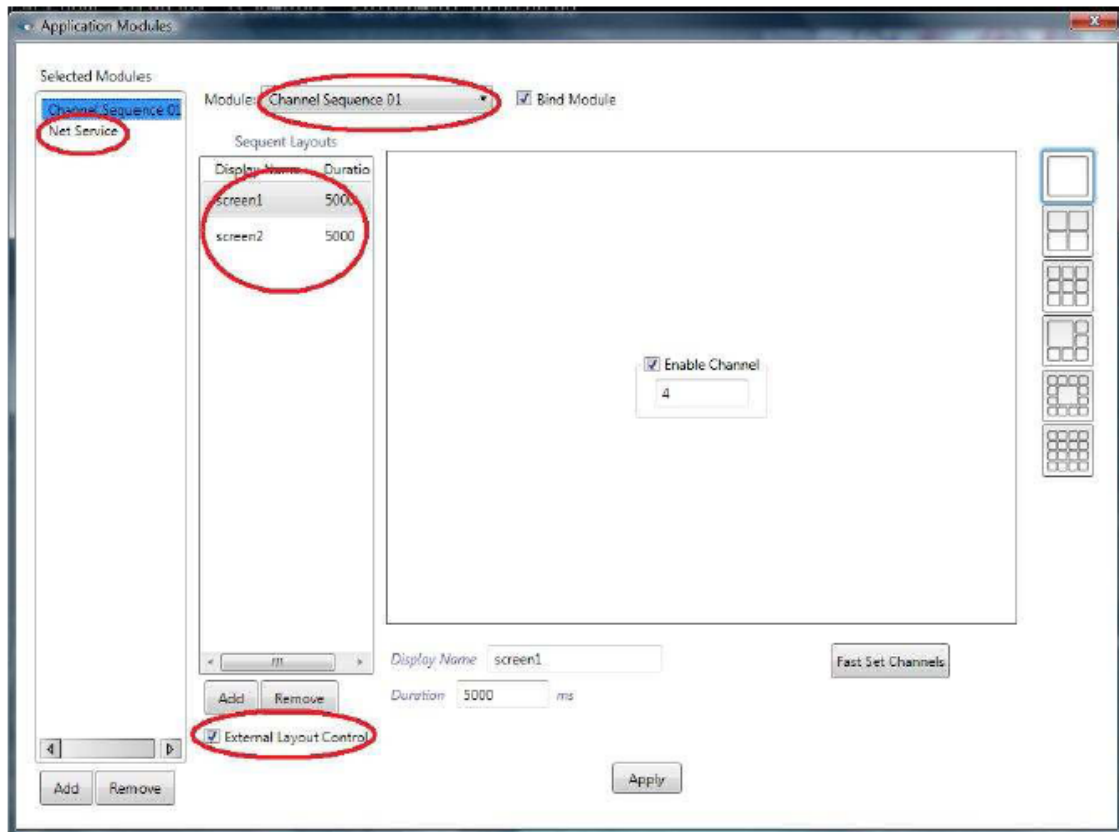
To install this module, please put the Video Wall folder into the folder where EyeSoft is installed, e.g. "C \ Program Files\ Securicorp Ltd \ EyeSoft \ Extensions.



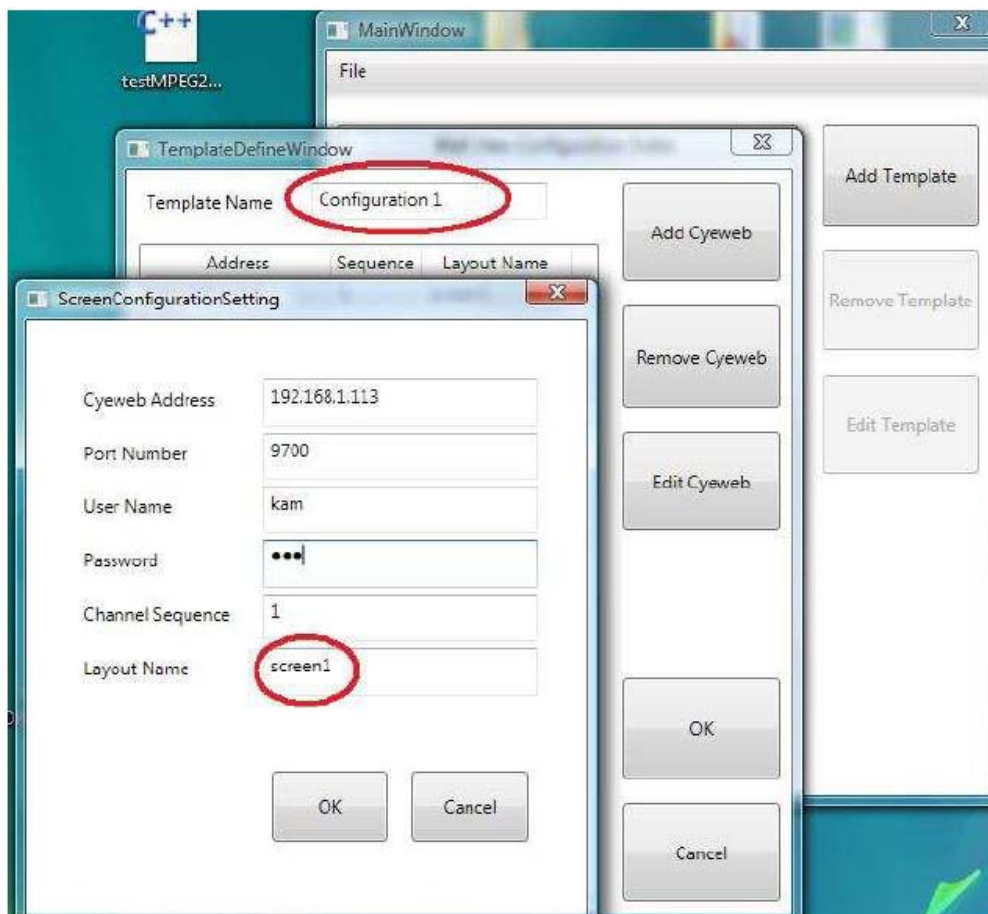
2. Add Application in EyeSoft

Open the "Setting Dialog", click the "Application Module"

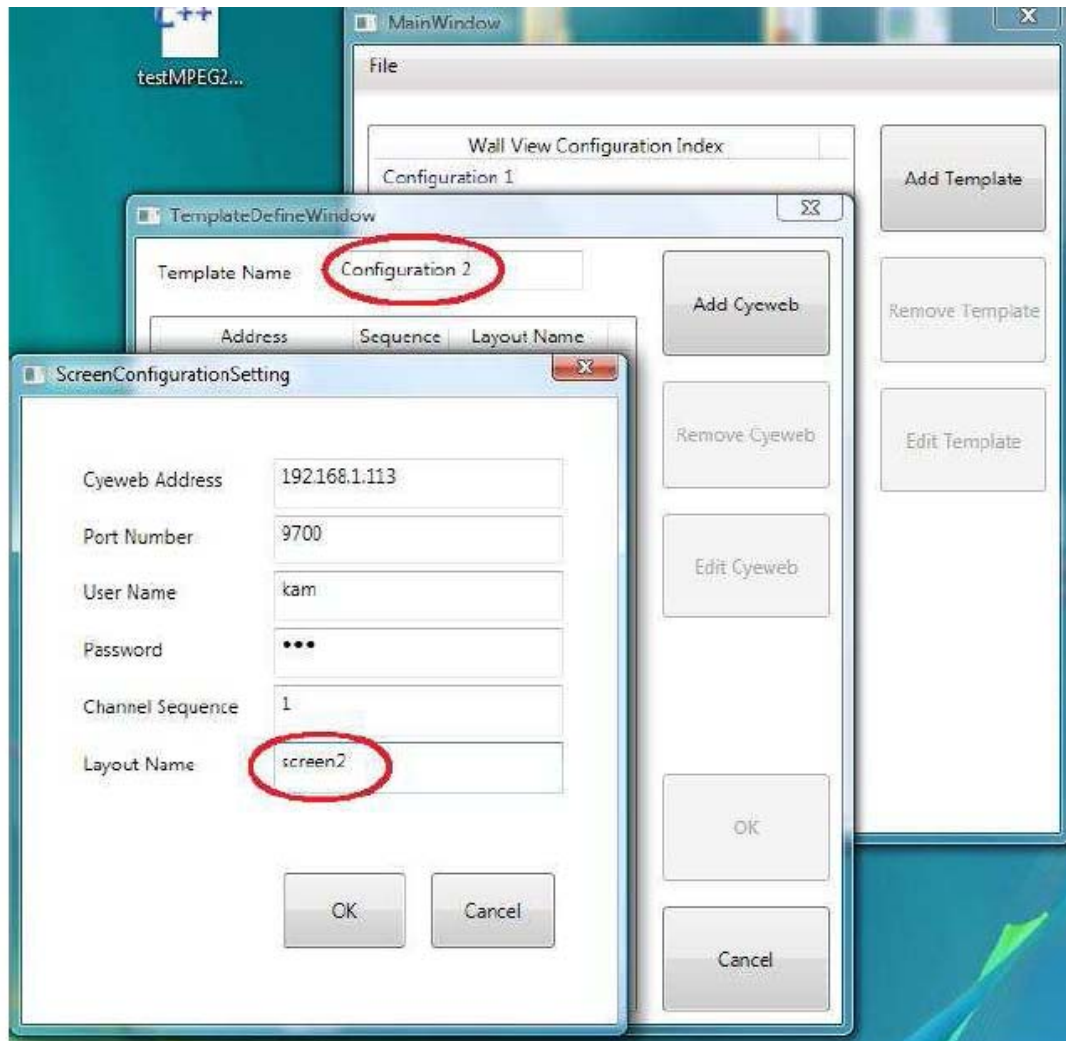




Make sure in EyeSoft the Modules “Channel Sequence” and “Net Service” is binded, also, in each Channel Sequence it must has more than 1 sequence layout, otherwise it will not be usable. Finally make sure External Layout Control option is checked, which allows it to be controlled by Video Wall application.

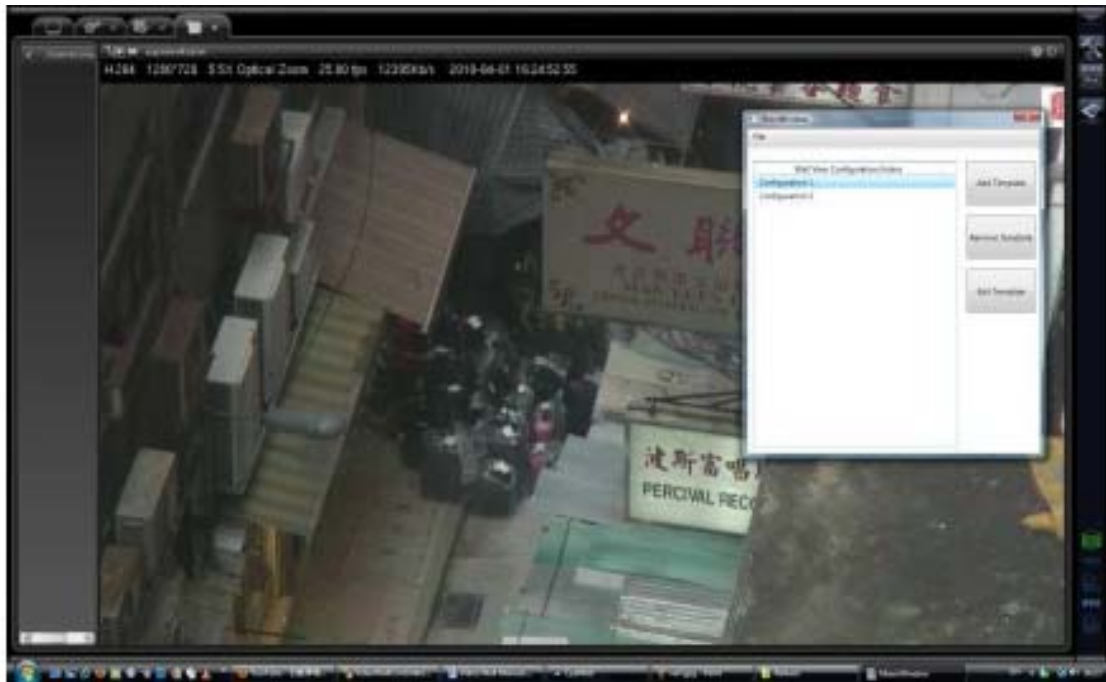


Now on the configuration of VW, we first need to add a template, which allows us to switch between different layouts, then we can name the template and add a site with EyeSoft installation into it, since we only have one EyeSoft Site, we add it in by inserting its detail into the form. Now we add another template as below, we use **screen2** instead of **screen1**, it is because we will use this template to switch the view to **screen2**.



2. Viewing Video

At this stage, we can start to use the VW function to switch the view as illustrated below;



When we are using configuration 1, EyeSoft does nothing, it is because it is already using screen1 as its view, however when we change to configuration 2, the view will change to the following: (because the new settings will be applied)

